



杭州祥和电器有限公司  
Hangzhou Xianghe Electric Appliance Co., Ltd

# South African Type Product Catalogue

## 南非产品手册



杭州祥和电器有限公司

Hangzhou Xianghe Electric Appliance Co., Ltd

- ④ 地址: 中国浙江省杭州市建德梅城镇城南工业功能区 311604    ④ Add.: South Industrial Zone, Meicheng Town, Jiande, Hangzhou City, Zhejiang Province, China 311604
- ✉ 邮箱: xh@xianghe-electric.com    xianghehz@163.com    ✉ E-mail: xh@xianghe-electric.com    xianghehz@163.com
- ☎ 电话: +86(571)64188255    64188355    64188055    ☎ Tel.: +86(571)64188255    64188355    64188055
- ☎ 传真: +86(571)64185885    ☎ Fax.: +86(571)64185885
- 🌐 网址: www.xianghe-electric.com    🌐 URL: www.xianghe-electric.com

# COMPANY INTRODUCE

## 企业介绍

杭州祥和电器有限公司是专业制造排插、延长线、线盘、各国多用转换插座及检修灯。工厂坐落于风景秀丽的梅城古镇，邻近千岛湖，杭新景高速，杭黄高铁横穿而过。

我们致力于为客户打造多样式的新型产品，以具有竞争力的价格和优质服务做依托。我们有专业的团队设计开发，配合严谨的生产管理，创造出优质的产品。我们的产品通过 CE、Rohs 等多项专业检测。产品出口亚洲、欧洲、非洲、美洲的大多数国家。通过我们不断的努力，我们相信通过我们坚持不懈的努力，我们会和您一起创新，共赢。

Hangzhou Xianghe Electric Appliance Co., Ltd locates in meicheng town, near qiandao lake. We are a factory, specializes in developing and producing various extension sockets, power strip, extension cord, extension cable reel, work light etc.

We can make oem & odm products for you in competitive prices and give you the best service. We have professional teams to service for you. We have professional production equipment and inspection equipment. Product quality is controlled strictly according to CE,GS, VDE and other approval standards. Through our continuous efforts, we believe that we will innovate and win together with you.

Welcome to join us to make better future.



我们的宗旨

# OUR MISSION

用心创造，  
用心管理，  
用心服务。

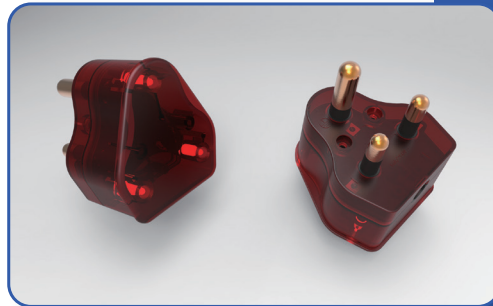
Create by our heart,  
Manage by our heart,  
Serve with our heart.



# Best Selling Products

# Authentication Certificate

XH-SAS1001



XH-SAS1003



XH-SAS6N51



XH-SAS2N23U+C



Test Report based on the responsibility of:

<b>intertek</b> Intertek Group Limited	
<b>TEST REPORT</b> IEC 60884-1 Plugs and socket-outlets for household and similar purposes Part 1: General requirements	
Report Number: 220800795HA-001	Date of Issue: 2022-03-30
Date of Issue: 2022-03-30	Issue of Issue: 2022-03-30
Total number of pages: 41	Test Report Form No.: IEC0084_1B
Applicant's name: Hangzhou Xianghe Electric Appliance Co., Ltd	Address: South Industrial Zone, Meisheng Town, Jiaxing, Hangzhou City, Zhejiang Province, China 311604
Test specification: IEC 60884-1:2011 + A1:2013 + SANS 164-0:2011 + SANS 164-1:2011 + SANS 164-2:2011 + SANS 164-3:2011 + SANS 164-4:2011 + SANS 164-5:2011 + SANS 164-6:2011 + SANS 164-7:2011 + SANS 164-8:2011 + SANS 164-9:2011 + SANS 164-10:2011 + SANS 164-11:2011 + SANS 164-12:2011 + SANS 164-13:2011 + SANS 164-14:2011 + SANS 164-15:2011 + SANS 164-16:2011 + SANS 164-17:2011 + SANS 164-18:2011 + SANS 164-19:2011 + SANS 164-20:2011 + SANS 164-21:2011 + SANS 164-22:2011 + SANS 164-23:2011 + SANS 164-24:2011 + SANS 164-25:2011 + SANS 164-26:2011 + SANS 164-27:2011 + SANS 164-28:2011 + SANS 164-29:2011 + SANS 164-30:2011 + SANS 164-31:2011 + SANS 164-32:2011 + SANS 164-33:2011 + SANS 164-34:2011 + SANS 164-35:2011 + SANS 164-36:2011 + SANS 164-37:2011 + SANS 164-38:2011 + SANS 164-39:2011 + SANS 164-40:2011 + SANS 164-41:2011 + SANS 164-42:2011 + SANS 164-43:2011 + SANS 164-44:2011 + SANS 164-45:2011 + SANS 164-46:2011 + SANS 164-47:2011 + SANS 164-48:2011 + SANS 164-49:2011 + SANS 164-50:2011 + SANS 164-51:2011 + SANS 164-52:2011 + SANS 164-53:2011 + SANS 164-54:2011 + SANS 164-55:2011 + SANS 164-56:2011 + SANS 164-57:2011 + SANS 164-58:2011 + SANS 164-59:2011 + SANS 164-60:2011 + SANS 164-61:2011 + SANS 164-62:2011 + SANS 164-63:2011 + SANS 164-64:2011 + SANS 164-65:2011 + SANS 164-66:2011 + SANS 164-67:2011 + SANS 164-68:2011 + SANS 164-69:2011 + SANS 164-70:2011 + SANS 164-71:2011 + SANS 164-72:2011 + SANS 164-73:2011 + SANS 164-74:2011 + SANS 164-75:2011 + SANS 164-76:2011 + SANS 164-77:2011 + SANS 164-78:2011 + SANS 164-79:2011 + SANS 164-80:2011 + SANS 164-81:2011 + SANS 164-82:2011 + SANS 164-83:2011 + SANS 164-84:2011 + SANS 164-85:2011 + SANS 164-86:2011 + SANS 164-87:2011 + SANS 164-88:2011 + SANS 164-89:2011 + SANS 164-90:2011 + SANS 164-91:2011 + SANS 164-92:2011 + SANS 164-93:2011 + SANS 164-94:2011 + SANS 164-95:2011 + SANS 164-96:2011 + SANS 164-97:2011 + SANS 164-98:2011 + SANS 164-99:2011 + SANS 164-100:2011	

Test Report based on the responsibility of:

<b>intertek</b> Intertek Group Limited	
<b>TEST REPORT</b> IEC 61643-11 Low-voltage surge protective devices Part 1: Surge protective devices connected to low-voltage power systems: Requirements and test methods	
Report Number: 220800795HA-001	Date of Issue: 2022-03-30
Date of Issue: 2022-03-30	Issue of Issue: 2022-03-30
Total number of pages: 81	Test Report Form No.: IEC0084_1B
Applicant's name: Hangzhou Xianghe Electric Appliance Co., Ltd	Address: South Industrial Zone, Meisheng Town, Jiaxing, Hangzhou City, Zhejiang Province, China 311604
Test specification: IEC 61643-11:2011	Test procedure: Testing
Test Report Form No.: IEC0084_1B	Non-standard test method: N/A
Test Report Form No.: IEC0084_1B	Test Report Form Originator: IEC
Issue of Issue: 2022-03-30	Copyright © 2012 Intertek Group Limited. All rights reserved.

Test Verification of Conformity  
Verification Number: 220800795HA-V1

Applicant Name & Address: Hangzhou Xianghe Electric Appliance Co., Ltd, South Industrial Zone, Meisheng Town, Jiaxing, Hangzhou City, Zhejiang Province, China 311604

Product Name: Surge Protective Device

Model: XH-SAS1001

Manufacturer: Hangzhou Xianghe Electric Appliance Co., Ltd

Address: South Industrial Zone, Meisheng Town, Jiaxing, Hangzhou City, Zhejiang Province, China 311604

Test Report Number: 220800795HA-001

Issue Date: 2022-03-30

Valid Until: 2023-03-30

Test Report based on the responsibility of:

<b>intertek</b> Intertek Group Limited	
<b>TEST REPORT</b> IEC 62368-1 Audio, video, information and communication technology equipment Part 1: Safety requirements	
Report Number: 220800795HA-001	Date of Issue: 2022-03-30
Date of Issue: 2022-03-30	Issue of Issue: 2022-03-30
Total number of pages: 85 pages	Test Report Form No.: IEC0084_1G
Applicant's name: Hangzhou Xianghe Electric Appliance Co., Ltd	Address: South Industrial Zone, Meisheng Town, Jiaxing, Hangzhou City, Zhejiang Province, China 311604
Test specification: IEC 62368-1:2018 (Second Edition)	Test procedure: Testing
Test Report Form No.: IEC0084_1G	Non-standard test method: N/A
Test Report Form No.: IEC0084_1G	Test Report Form Originator: IEC
Issue of Issue: 2022-03-30	Copyright © 2018 Intertek Group Limited. All rights reserved.

Test Report based on the responsibility of:

<b>intertek</b> Intertek Group Limited	
<b>TEST REPORT</b> IEC 60884-1 Plugs and socket-outlets for household and similar purposes Part 1: General requirements	
Report Number: 22010725HA-001	Date of Issue: 2022-03-30
Date of Issue: 2022-03-30	Issue of Issue: 2022-03-30
Total number of pages: 65	Test Report Form No.: IEC0084_1B
Applicant's name: Hangzhou Xianghe Electric Appliance Co., Ltd	Address: South Industrial Zone, Meisheng Town, Jiaxing, Hangzhou City, Zhejiang Province, China 311604
Test specification: IEC 60884-1:2011 + A1:2013 + SANS 164-0:2011 + SANS 164-1:2011 + SANS 164-2:2011 + SANS 164-3:2011 + SANS 164-4:2011 + SANS 164-5:2011 + SANS 164-6:2011 + SANS 164-7:2011 + SANS 164-8:2011 + SANS 164-9:2011 + SANS 164-10:2011 + SANS 164-11:2011 + SANS 164-12:2011 + SANS 164-13:2011 + SANS 164-14:2011 + SANS 164-15:2011 + SANS 164-16:2011 + SANS 164-17:2011 + SANS 164-18:2011 + SANS 164-19:2011 + SANS 164-20:2011 + SANS 164-21:2011 + SANS 164-22:2011 + SANS 164-23:2011 + SANS 164-24:2011 + SANS 164-25:2011 + SANS 164-26:2011 + SANS 164-27:2011 + SANS 164-28:2011 + SANS 164-29:2011 + SANS 164-30:2011 + SANS 164-31:2011 + SANS 164-32:2011 + SANS 164-33:2011 + SANS 164-34:2011 + SANS 164-35:2011 + SANS 164-36:2011 + SANS 164-37:2011 + SANS 164-38:2011 + SANS 164-39:2011 + SANS 164-40:2011 + SANS 164-41:2011 + SANS 164-42:2011 + SANS 164-43:2011 + SANS 164-44:2011 + SANS 164-45:2011 + SANS 164-46:2011 + SANS 164-47:2011 + SANS 164-48:2011 + SANS 164-49:2011 + SANS 164-50:2011 + SANS 164-51:2011 + SANS 164-52:2011 + SANS 164-53:2011 + SANS 164-54:2011 + SANS 164-55:2011 + SANS 164-56:2011 + SANS 164-57:2011 + SANS 164-58:2011 + SANS 164-59:2011 + SANS 164-60:2011 + SANS 164-61:2011 + SANS 164-62:2011 + SANS 164-63:2011 + SANS 164-64:2011 + SANS 164-65:2011 + SANS 164-66:2011 + SANS 164-67:2011 + SANS 164-68:2011 + SANS 164-69:2011 + SANS 164-70:2011 + SANS 164-71:2011 + SANS 164-72:2011 + SANS 164-73:2011 + SANS 164-74:2011 + SANS 164-75:2011 + SANS 164-76:2011 + SANS 164-77:2011 + SANS 164-78:2011 + SANS 164-79:2011 + SANS 164-80:2011 + SANS 164-81:2011 + SANS 164-82:2011 + SANS 164-83:2011 + SANS 164-84:2011 + SANS 164-85:2011 + SANS 164-86:2011 + SANS 164-87:2011 + SANS 164-88:2011 + SANS 164-89:2011 + SANS 164-90:2011 + SANS 164-91:2011 + SANS 164-92:2011 + SANS 164-93:2011 + SANS 164-94:2011 + SANS 164-95:2011 + SANS 164-96:2011 + SANS 164-97:2011 + SANS 164-98:2011 + SANS 164-99:2011 + SANS 164-100:2011	

**NOA**  
QUALITY MANAGEMENT SYSTEM  
CERTIFICATE

This is to certify that the QUALITY MANAGEMENT SYSTEM of  
**Hangzhou Xianghe Electric Appliance Co., Ltd.**  
Registered Address: 3 Floor, No. 1 First South Industrial Zone, Meisheng Town, Jiaxing, Hangzhou City, Zhejiang Province

Audit Address: No. 65, Haifeng Road, South Industrial Zone, Meisheng Town, Jiaxing City, Hangzhou City, Zhejiang Province

Has been assessed by NOA Certification and found to comply with  
**GB/T 19001-2016 idt ISO 9001:2015**  
for the scope of  
Manufacture and sales of electronic components (power plugs and sockets, power connectors, power extension cord) (export sales only)

NOA Testing & Certification Group Ltd

## QMS CERTIFICATE

IEC60884, IEC62368(USB), IEC61643(SPD), IEC61000(EMC)  
SAN164-0, SAN164-1, SAN164-2, SAN164-6, SAN1661

# 目录

---

**01.**

**Surge Protectors / Electrical Multiplugs**

P01-30

**02.**

**Power Extension Cords**

P31-33

**03.**

**Adapters & Plugs**

P34-37

**04.**

**Extension Cable Reels**

P38

**05.**

**Work Lights**

P39

# DIRECTORY

## 01

MODEL:

**XH-SAS2N21**Built-in Surge  
Protection Settings**5-Outlet SA type Surge Protection Multiplugs**

Color: White

Shell Size: 275x59.5x37.2mm

Input Socket: 1x16A SA plug

Output Socket: 2x16A SA outlets +2x16A N outlets  
+1x10A Schuko outlet

Shell Material: fire-resistant P/P

With Children Protection

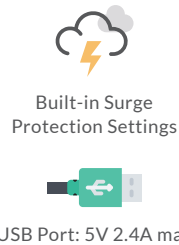
With Lighted Reset/off Switch

With Surge Indicator Light

With Surge Protection 450J

PVC Wire Spec: H05VV-F, 3G1.0mm<sup>2</sup>/3G1.5mm<sup>2</sup>  
250V~, 16A Max. Power: 3500W**Surge Protectors  
/  
Electrical Multiplugs**

MODEL:

**XH-SAS2N23U+C**

## 4-Outlet SA type Surge Protection Multiplugs with USB Ports

Color: White

Shell Size: 275x59.5x37.2mm

Input Socket: 1x16A SA plug

Output Socket: 2x16A SA outlets + 2x16A N outlets

Shell Material: fire-resistant P/P

With Children Protection

With Lighted RESET/OFF Switch

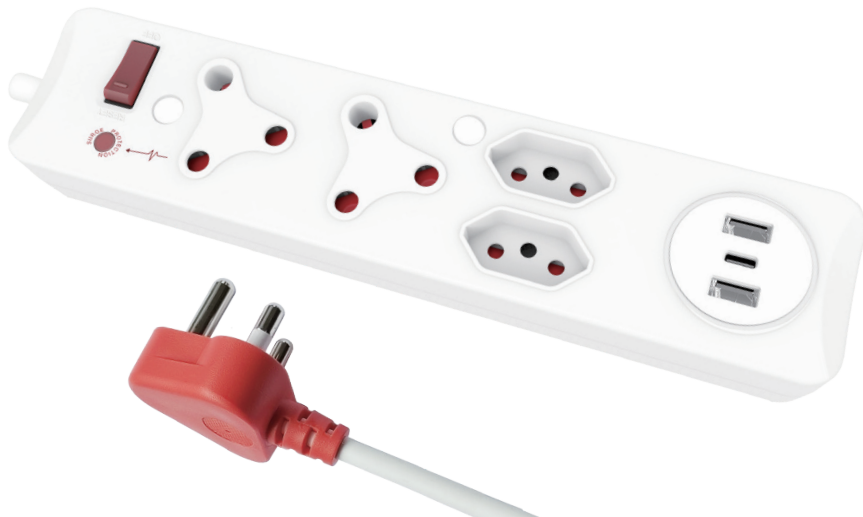
With Surge Indicator Light

With Surge Protection 450J

USB: 5V, 2.4A Max. ( 2 x Type A + 1 x Type C )

PVC Wire Spec: H05VV-F, 3G1.0mm<sup>2</sup>/3G1.5mm<sup>2</sup>

250V~, 16A Max. Power: 3500W



MODEL:

**XH-SA2N21**

## 5-Outlet SA type Multiplugs

Color: White

Shell Size: 275x59.5x37.2mm

Input Socket: 1x16A SA plug

Output Socket: 2x16A SA outlets + 2x16A N outlets  
+ 1x10A Schuko outlet

Shell Material: fire-resistant P/P

With Children Protection

With Lighted RESET/OFF Switch

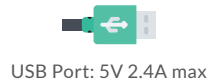
With Power Indicator Light

PVC Wire Spec: H05VV-F, 3G1.0mm<sup>2</sup>/3G1.5mm<sup>2</sup>

250V~, 16A Max. Power: 3500W



MODEL:

**XH-SA2N23U+C****4-Outlet SA type Multiplugs with USB Ports**

Color: White

Shell Size: 275x59.5x37.2mm

Input Socket: 1x16A SA plug

Output Socket: 2x16A SA outlets + 2x16A N outlets

Shell Material: fire-resistant P/P

With Children Protection

With Lighted RESET/OFF Switch

With Power Indicator Light

USB: 5V, 2.4A Max. ( 2 x Type A + 1 x Type C )

PVC Wire Spec: H05VV-F, 3G1.0mm<sup>2</sup>/3G1.5mm<sup>2</sup>

250V~, 16A Max. Power: 3500W



MODEL:

**XH-SAS4N31****8-Outlet SA type Surge Protection Multiplugs**

Color: White

Shell Size: 252x101x37.6mm

Input Socket: 1x16A SA plug

Output Socket: 4x16A SA outlets + 3x16A N outlets  
+ 1x10A Schuko outlet

Shell Material: fire-resistant P/P

With Children Protection

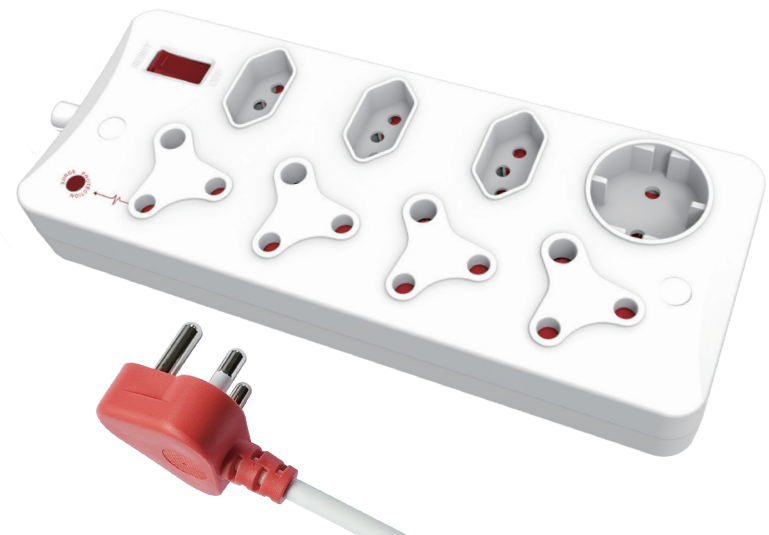
With illuminated RESET/OFF Switch

With Surge Indicator Light

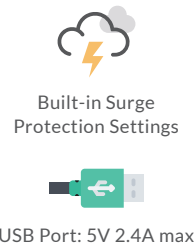
With Surge Protection 450J

PVC Wire Spec: H05VV-F, 3G1.0mm<sup>2</sup>/3G1.5mm<sup>2</sup>

250V~, 16A Max. Power: 3500W



MODEL:

**XH-SAS4N33U+C**

## 7-Outlet SA type Surge Protection Multiplugs with USB Ports

Color: White

Shell Size: 252x101x37.6mm

Input Socket: 1x16A SA plug

Output Socket: 4x16A SA outlets + 3x16A N outlets

Shell Material: fire-resistant P/P

With Children Protection

With Lighted RESET/OFF Switch

With Surge Indicator Light

With Surge Protection 450J

USB: 5V, 2.4A Max. ( 2 x Type A + 1 x Type C )

PVC Wire Spec: H05VV-F, 3G1.0mm<sup>2</sup>/3G1.5mm<sup>2</sup>

250V~, 16A Max. Power: 3500W



MODEL:

**XH-SA4N31**

## 8-Outlet SA type Multiplugs

Color: White

Shell Size: 252x101x37.6mm

Input Socket: 1x16A SA plug

Output Socket: 4x16A SA outlets + 3x16A N outlets  
+ 1x10A Schuko outlet

Shell Material: fire-resistant P/P

With Children Protection

With Lighted RESET/OFF Switch

With Power Indicator Light

PVC Wire Spec: H05VV-F, 3G1.0mm<sup>2</sup>/3G1.5mm<sup>2</sup>

250V~, 16A Max. Power: 3500W





MODEL:

**XH-SA4N33U+C**

USB Port: 5V 2.4A max

**7-Outlet SA type Multiplugs with USB Ports**

Color: White

Shell Size: 252x101x37.6mm

Input Socket: 1x16A SA plug

Output Socket: 4x16A SA outlets + 3x16A N outlets

Shell Material: fire-resistant P/P

With Children Protection

With Lighted RESET/OFF Switch

With Power Indicator Light

USB: 5V, 2.4A Max. ( 2 x Type A + 1 x Type C )

PVC Wire Spec: H05VV-F, 3G1.0mm<sup>2</sup>/3G1.5mm<sup>2</sup>

250V~, 16A Max. Power: 3500W



MODEL:

**XH-SAS6N51**Built-in Surge  
Protection Settings**12-Outlet SA type Surge Protection Multiplugs**

Color: White

Shell Size: 348x101x37.6mm

Input Socket: 1x16A SA plug

Output Socket: 6x16A SA outlets + 5x16A N outlets  
+ 1x10A Schuko outlet

Shell Material: fire-resistant P/P

With Children Protection

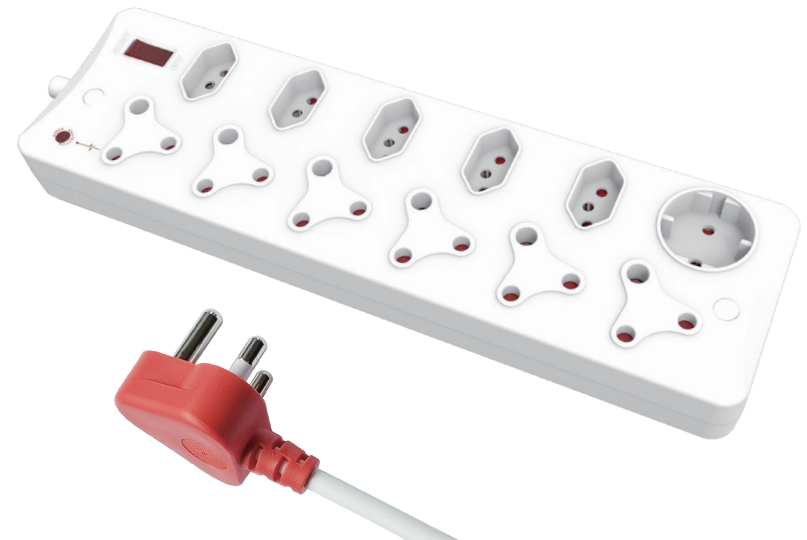
With Lighted RESET/OFF Switch

With Surge Indicator Light

With Surge Protection 450J

PVC Wire Spec: H05VV-F, 3G1.0mm<sup>2</sup>/3G1.5mm<sup>2</sup>

250V~, 16A Max. Power: 3500W



MODEL:

**XH-SAS6N53U+C**

USB Port: 5V 2.4A max

## 11-Outlet SA type Surge Protection Multiplugs with USB Ports

Color: White

Shell Size: 348x101x37.6mm

Input Socket: 1x16A SA plug

Output Socket: 6x16A SA outlets + 5x16A N outlets

Shell Material: fire-resistant P/P

With Children Protection

With Lighted RESET/OFF Switch

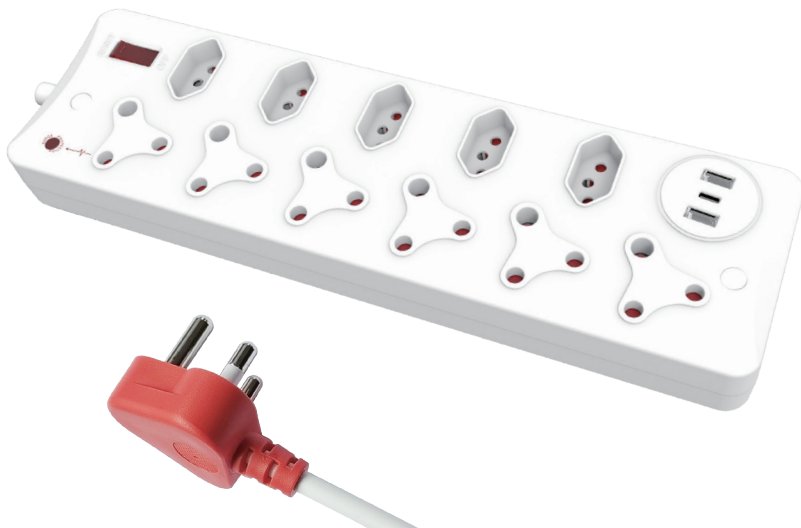
With Surge Indicator Light

With Surge Protection 450J

USB: 5V, 2.4A Max. ( 2 x Type A + 1 x Type C )

PVC Wire Spec: H05VV-F, 3G1.0mm<sup>2</sup>/3G1.5mm<sup>2</sup>

250V~, 16A Max. Power: 3500W



MODEL:

**XH-SA6N51**

## 12-Outlet SA type Multiplugs

Color: White

Shell Size: 348x101x37.6mm

Input Socket: 1x16A SA plug

Output Socket: 6x16A SA outlets + 5x16A N outlets  
+ 1x10A Schuko outlet

Shell Material: fire-resistant P/P

With Children Protection

With Lighted RESET/OFF Switch

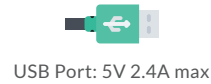
With Power Indicator Light

PVC Wire Spec: H05VV-F, 3G1.0mm<sup>2</sup>/3G1.5mm<sup>2</sup>

250V~, 16A Max. Power: 3500W



MODEL:

**XH-SA6N53U+C**

## 11-Outlet SA type Multiplugs with USB Ports

Color: White

Shell Size: 348x101x37.6mm

Input Socket: 1x16A SA plug

Output Socket: 6x16A SA outlets + 5x16A N outlets

Shell Material: fire-resistant P/P

With Children Protection

With Lighted RESET/OFF Switch

With Power Indicator Light

USB: 5V, 2.4A Max. ( 2 x Type A + 1 x Type C )

PVC Wire Spec: H05VV-F, 3G1.0mm<sup>2</sup>/3G1.5mm<sup>2</sup>

250V~, 16A Max. Power: 3500W



MODEL:

**XH-SAS211**

## 4-Outlet SA type Surge Protection Multiplugs

Color: White

Shell Size: 253x59.5x37.2mm

Input Socket: 1x16A SA plug

Output Socket: 2x16A SA outlets + 1x6A EU outlet  
+ 1x10A Schuko outlet

Shell Material: fire-resistant P/P

With Children Protection

With Lighted RESET/OFF Switch

With Surge Indicator Light

With Surge Protection 450J

PVC Wire Spec: H05VV-F, 3G1.0mm<sup>2</sup>/3G1.5mm<sup>2</sup>

250V~, 16A Max. Power: 3500W



MODEL:

**XH-SAS22****4-Outlet SA type Surge Protection Multiplugs**

Color: White

Shell Size: 253x59.5x37.2mm

Input Socket: 1x16A SA plug

Output Socket: 2x16A SA outlets + 2x6A EU outlets

Shell Material: fire-resistant P/P

With Children Protection

With Lighted RESET/OFF Switch

With Surge Indicator Light

With Surge Protection 450J

PVC Wire Spec: H05VV-F, 3G1.0mm<sup>2</sup>/3G1.5mm<sup>2</sup>

250V~, 16A Max. Power: 3500W



MODEL:

**XH-SAS212U****3-Outlet SA type Surge Protection Multiplugs with USB Ports**

Color: White

Shell Size: 253x59.5x37.2mm

Input Socket: 1x16A SA plug

Output Socket: 2x16A SA outlets + 1x6A EU outlet

Shell Material: fire-resistant P/P

With Children Protection

With Lighted RESET/OFF Switch

With Surge Indicator Light

With Surge Protection 450J

USB: 5V, 2.4A Max. ( 2 x Type A / 1xType A + 1xType C )

PVC Wire Spec: H05VV-F, 3G1.0mm<sup>2</sup>/3G1.5mm<sup>2</sup>

250V~, 16A Max. Power: 3500W



MODEL:

# XH-SA211

---

## 4-Outlet SA type Multiplugs

Color: White

Shell Size: 253x59.5x37.2mm

Input Socket: 1x16A SA plug

Output Socket: 2x16A SA outlets + 1x6A EU outlet  
+ 1x10A Schuko outlet

Shell Material: fire-resistant P/P

With Children Protection

With Lighted RESET/OFF Switch

With Power Indicator Light

PVC Wire Spec: H05VV-F, 3G1.0mm<sup>2</sup>/3G1.5mm<sup>2</sup>

250V~, 16A Max. Power: 3500W



MODEL:

# XH-SA22

---

## 4-Outlet SA type Multiplugs

Color: White

Shell Size: 253x59.5x37.2mm

Input Socket: 1x16A SA plug

Output Socket: 2x16A SA outlets + 2x6A EU outlets

Shell Material: fire-resistant P/P

With Children Protection

With Lighted RESET/OFF Switch

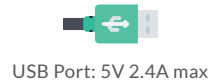
With Power Indicator Light

PVC Wire Spec: H05VV-F, 3G1.0mm<sup>2</sup>/3G1.5mm<sup>2</sup>

250V~, 16A Max. Power: 3500W



MODEL:

**XH-SA212U****3-Outlet SA type Multiplugs with USB Ports**

Color: White

Shell Size: 253x59.5x37.2mm

Input Socket: 1x16A SA plug

Output Socket: 2x16A SA outlets + 1x6A EU outlet

Shell Material: fire-resistant P/P

With Children Protection

With Lighted RESET/OFF Switch

With Power Indicator Light

USB: 5V, 2.4A Max. ( 2 x Type A / 1xType A + 1xType C )

PVC Wire Spec: H05VV-F, 3G1.0mm<sup>2</sup>/3G1.5mm<sup>2</sup>

250V~, 16A Max. Power: 3500W



MODEL:

**XH-SAS321****6-Outlet SA type Surge Protection Multiplugs**

Color: White

Shell Size: 204x101x37.6mm

Input Socket: 1x16A SA plug

Output Socket: 3x16A SA outlets + 2x6A EU outlets  
+ 1x10A Schuko outlet

Shell Material: fire-resistant P/P

With Children Protection

With Lighted RESET/OFF Switch

With Surge Indicator Light

With Surge Protection 450J

PVC Wire Spec: H05VV-F, 3G1.0mm<sup>2</sup>/3G1.5mm<sup>2</sup>

250V~, 16A Max. Power: 3500W



MODEL:

**XH-SAS33****6-Outlet SA type Surge Protection Multiplugs**

Color: White

Shell Size: 204x101x37.6mm

Input Socket: 1x16A SA plug

Output Socket: 3x16A SA outlets + 3x6A EU outlets

Shell Material: fire-resistant P/P

With Children Protection

With Lighted RESET/OFF Switch

With Surge Indicator Light

With Surge Protection 450J

PVC Wire Spec: H05VV-F, 3G1.0mm<sup>2</sup>/3G1.5mm<sup>2</sup>

250V~, 16A Max. Power: 3500W



MODEL:

**XH-SAS322U****5-Outlet SA type Surge Protection Multiplugs with USB Ports**

Color: White

Shell Size: 204x101x37.6mm

Input Socket: 1x16A SA plug

Output Socket: 3x16A SA outlets + 2x6A EU outlets

Shell Material: fire-resistant P/P

With Children Protection

With Lighted RESET/OFF Switch

With Surge Indicator Light

With Surge Protection 450J

USB: 5V, 2.4A Max. ( 2 x Type A / 1xType A + 1xType C )

PVC Wire Spec: H05VV-F, 3G1.0mm<sup>2</sup>/3G1.5mm<sup>2</sup>

250V~, 16A Max. Power: 3500W



MODEL:

# XH-SA321

## 6-Outlet SA type Multiplugs

Color: White

Shell Size: 204x101x37.6mm

Input Socket: 1x16A SA plug

Output Socket: 3x16A SA outlets + 2x6A EU outlets  
+ 1x10A Schuko outlet

Shell Material: fire-resistant P/P

With Children Protection

With Lighted RESET/OFF Switch

With Power Indicator Light

PVC Wire Spec: H05VV-F, 3G1.0mm<sup>2</sup>/3G1.5mm<sup>2</sup>

250V~, 16A Max. Power: 3500W



MODEL:

# XH-SA33

## 6-Outlet SA type Multiplugs

Color: White

Shell Size: 204x101x37.6mm

Input Socket: 1x16A SA plug

Output Socket: 3x16A SA outlets + 3x6A EU outlets

Shell Material: fire-resistant P/P

With Children Protection

With Lighted RESET/OFF Switch

With Power Indicator Light

PVC Wire Spec: H05VV-F, 3G1.0mm<sup>2</sup>/3G1.5mm<sup>2</sup>

250V~, 16A Max. Power: 3500W





MODEL:

**XH-SA322U**

USB Port: 5V 2.4A max

**5-Outlet SA type Multiplugs with USB Ports**

Color: White

Shell Size: 204x101x37.6mm

Input Socket: 1x16A SA plug

Output Socket: 3x16A SA outlets + 2x6A EU outlets

Shell Material: fire-resistant P/P

With Children Protection

With Lighted RESET/OFF Switch

With Power Indicator Light

USB: 5V, 2.4A Max. ( 2 x Type A / 1xType A + 1xType C )

PVC Wire Spec: H05VV-F, 3G1.0mm<sup>2</sup>/3G1.5mm<sup>2</sup>

250V~, 16A Max. Power: 3500W



MODEL:

**XH-SAS541**Built-in Surge  
Protection Settings**10-Outlet SA type Surge Protection Multiplugs**

Color: White

Shell Size: 300x101x37.6mm

Input Socket: 1x16A SA plug

Output Socket: 5x16A SA outlets + 4x6A EU outlets  
+ 1x10A Schuko outlet

Shell Material: fire-resistant P/P

With Children Protection

With Lighted RESET/OFF Switch

With Surge Indicator Light

With Surge Protection 450J

PVC Wire Spec: H05VV-F, 3G1.0mm<sup>2</sup>/3G1.5mm<sup>2</sup>

250V~, 16A Max. Power: 3500W



MODEL:

**XH-SAS55****10-Outlet SA type Surge Protection Multiplugs**

Color: White

Shell Size: 300x101x37.6mm

Input Socket: 1x16A SA plug

Output Socket: 5x16A SA outlets + 5x6A EU outlets

Shell Material: fire-resistant P/P

With Children Protection

With Lighted RESET/OFF Switch

With Surge Indicator Light

With Surge Protection 450J

PVC Wire Spec: H05VV-F, 3G1.0mm<sup>2</sup>/3G1.5mm<sup>2</sup>

250V~, 16A Max. Power: 3500W



MODEL:

**XH-SAS542U**

USB Port: 5V 2.4A max

**9-Outlet SA type Surge Protection Multiplugs with USB Ports**

Color: White

Shell Size: 300x101x37.6mm

Input Socket: 1x16A SA plug

Output Socket: 5x16A SA outlets + 4x6A EU outlets

Shell Material: fire-resistant P/P

With Children Protection

With Lighted RESET/OFF Switch

With Surge Indicator Light

With Surge Protection 450J

USB: 5V, 2.4A Max. ( 2 x Type A / 1xType A + 1xType C )

PVC Wire Spec: H05VV-F, 3G1.0mm<sup>2</sup>/3G1.5mm<sup>2</sup>

250V~, 16A Max. Power: 3500W



MODEL:

# XH-SA541

## 10-Outlet SA type Multiplugs

Color: White

Shell Size: 300x101x37.6mm

Input Socket: 1x16A SA plug

Output Socket: 5x16A SA outlets + 4x6A EU outlets  
+ 1x10A Schuko outlet

Shell Material: fire-resistant P/P

With Children Protection

With Lighted RESET/OFF Switch

With Power Indicator Light

PVC Wire Spec: H05VV-F, 3G1.0mm<sup>2</sup>/3G1.5mm<sup>2</sup>

250V~, 16A Max. Power: 3500W



MODEL:

# XH-SA55

## 10-Outlet SA type Multiplugs

Color: White

Shell Size: 300x101x37.6mm

Input Socket: 1x16A SA plug

Output Socket: 5x16A SA outlets + 5x6A EU outlets

Shell Material: fire-resistant P/P

With Children Protection

With Lighted RESET/OFF Switch

With Power Indicator Light

PVC Wire Spec: H05VV-F, 3G1.0mm<sup>2</sup>/3G1.5mm<sup>2</sup>

250V~, 16A Max. Power: 3500W



MODEL:

# XH-SA542U



USB Port: 5V 2.4A max

## 9-Outlet SA type Multiplugs with USB Ports

Color: White

Shell Size: 300x101x37.6mm

Input Socket: 1x16A SA plug

Output Socket: 5x16A SA outlets + 4x6A EU outlets

Shell Material: fire-resistant P/P

With Children Protection

With Lighted RESET/OFF Switch

With Power Indicator Light

USB: 5V, 2.4A Max. ( 2 x Type A / 1xType A + 1xType C )

PVC Wire Spec: H05VV-F, 3G1.0mm<sup>2</sup>/3G1.5mm<sup>2</sup>

250V~, 16A Max. Power: 3500W



# 02

## Power Extension Cords

MODEL:

**XH-SA02****South African type Power Extension Cord**

Color: White

Shell Size: 123x58x34.3mm

Input Socket: 1x16A SA plug

Output Socket: 2x16A SA outlets

Shell Material: fire-resistant P/P

With Children Protection

With Power Indicator Light

PVC Wire Spec: H05VV-F, 3G1.0mm<sup>2</sup>/3G1.5mm<sup>2</sup>

250V~, 10A (16A) Max. Power: 2500W (3500W)

**PACKING INFORMATION**

Cable Spec. /Length	Qty./Ctn.	Carton Size	G.W./N.W.	Packaging
1.0mm <sup>2</sup> /3m	30 pcs	55*26*27 cm	13.5/13.0 kgs	Poly Bag
1.0mm <sup>2</sup> /5m	20 pcs	44*26*27 cm	13.0/12.5 kgs	Poly Bag
1.0mm <sup>2</sup> /10m	20 pcs	47*29*31 cm	20.0/19.5 kgs	Poly Bag
1.0mm <sup>2</sup> /20m	10 pcs	43*33*26 cm	20.0/19.5 kgs	Poly Bag
1.5mm <sup>2</sup> /3m	30 pcs	55*26*28 cm	15.5/15.0 kgs	Poly Bag
1.5mm <sup>2</sup> /5m	20 pcs	44*26*28 cm	15.5/15.0 kgs	Poly Bag
1.5mm <sup>2</sup> /10m	20 pcs	47*29*31 cm	26.0/25.5 kgs	Poly Bag
1.5mm <sup>2</sup> /20m	10 pcs	43*33*27 cm	24.5/24.0 kgs	Poly Bag

MODEL:

# XH-EX09

---

South African type Power Extension Cord  
LAWNMOVER cable

Color: White

Shell Size: 123x58x34.3mm

Input Socket: 1x16A SA plug

Output Socket: 1x10A Schuko outlet

Shell Material: fire resistant ABS & PVC

With Children Protection

PVC Wire Spec: H05VV-F, 3G1.0mm<sup>2</sup>/3G1.5mm<sup>2</sup>

250V~, 10A Max. Power: 2500W



# 03

## Adapters & Plugs

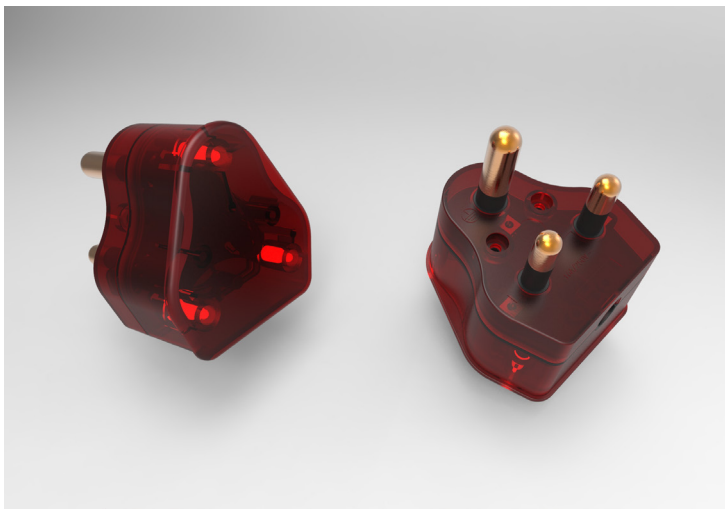
MODEL:

# XH-SAS1001

---

South African type  
High Surge Protection Rewirable Plug

Color: Transparent Red  
Input Socket: 1x16A SA plug  
Shell Material: PC & fire resistant P/P  
With Surge Protection 500J ~ 700J  
250V~, 16A Max. Power: 3680W



MODEL:

# XH-SAS1003

---

South African type  
High Surge Protection Adapter

Color: Transparent Red  
Input Socket: 1x16A SA plug  
Output Socket: 1x16A SA outlet + 1x16A N outlet  
Shell Material: PC  
With Children Protection  
With Surge Indicator Light  
With Surge Protection 1200J  
250V~, 16A Max. Power: 3680W



MODEL:

**XH-SAS1003U+C**

USB Port: 5V 2.4A max

## South African type High Surge Protection Adapter with USB Ports

Color: Transparent Red

Input Socket: 1x16A SA plug

Output Socket: 1x16A SA outlet + 1x16A N outlet

Shell Material: PC

With Children Protection

With Surge Indicator Light

With Surge Protection 1200J

USB: 5V~, 2.4A Max. ( 2 x Type A + 1 x Type C )

250V~, 16A Max.Power: 3680W



MODEL:

**XH-CD15**

## South African type Rewirable Plug

Color: Transparent &amp; Black

Input Socket: 1x16A SA plug

Shell Material: PC &amp; PVC

250V~, 16A Max. Power: 3680W





# 04

## Extension Cable Reels

MODEL:

# XH-SA25/50AP

South African

Extension Cable Reels (Max. 30/50Mtrs)

Color: Black & Yellow

Input Socket: 1x16A SA plug

Output Socket: 3 x 16A SA type outlets

Shell Material: PP & fire resistant P/P

With Children Protection

With Thermal Protector

H05VV-F 3G1.5mm<sup>2</sup>

250V~, 16A Max. Power: 3500W



# 05

## Work Lights

MODEL:

# XH-SA9101

---

220-240v~ Portable Work Light Lamp With Hook  
Metal Lampshade With Isolation Ribs  
With 360° Rotatable Hook

Color: Orange

Input Socket: 1x16A SA plug

Output Socket: E27 ceramic socket

Shell Material: PP & fire resistant P/P  
With Plastic Handle

With Lighted ON/OFF Switch

H05VV-F 2G0.75mm<sup>2</sup>

220~240V, Max. Power: 100W

